



National AGRO



National
AGRO



GENERAL BUSINESS INFORMATION

National Agro is one of the branch of our agricultural business, covers all aspects of agricultural business i.e land management, equipment's, fertilizer, Pesticides, and food processing for many decades.

With such "modest" beginning, **National Agro** was discovered on June, 2018. Under this banner we are dealing in Agriculture Implants as well as equipment's.



Message & Vision

Shahryar Ahmad
C.E.O.

EXECUTIVE SUMMARY

“Honesty is the best Practice”

National agro is a team of dedicated professionals fully equipped with most advance technology having a vast experience with professional expertise, Products delivered by Team National Agro are superior in quality, purity packaging. All our products are inspected by our highly experienced Quality Assurance unit to make sure that quality is not compromised at all stages of the process. We deliver on our promise of Quality, Quantity, Price, Sourcing, and Time.

QUALITY:

Quality is always our first priority. We are committed towards providing premium quality products to our valued clients. Our stringent quality testing procedures ensures that these high grade products are free from any fault. We support our engineers, who make sure of making good quality machines.

PRICE:

National Agro has a long list of clientele with the ever growing confidence and the trust of the customers offering total support to their entire satisfaction, with extremely competitive prices our customers are our pride.

TIME:

By maintaining large inventory of stocks at all time in our warehouses with steady delivery, we can offer immediate deliveries to our buyers. Thereby reducing the lead time for our customers to avail the opportunity in their domestic markets.

RESEARCH & DEVELOPMENT:

Our RND department is our key to success as they helps us decide in time, We invest in technology and process development to meet international standards, and to gain efficiency at all stages.

Our total employees are 15

ٹرانسمیٹر

ٹرانسمیٹر لیزر سسٹم کا وہ حصہ ہے جسے زمین سے تقریباً 3 میٹر اونچے ایک اسٹینڈ کی مدد سے کھیت میں نصب کیا جاتا ہے۔ اس کا روٹر 600 چکر فی منٹ کے حساب سے گھومتے ہوئے افقی سطح پر لیزر شعاعیں خارج کرتا ہے۔



ریسیور

ریسیور ایسا آلہ ہے جو ٹرانسمیٹر سے آنے والی لیزر شعاعیں موصول کر کے ان کو کنٹرول پینل کی طرف منتقل کرتا ہے۔ یہ سکرپیر پر لگے ہوئے ایک پائپ کے اوپر لگا دیا جاتا ہے۔ یہ آلہ سطح زمین کی بلندی اور نشیبی کے فرق کا ملی میٹروں میں پتہ دیتا رہتا ہے۔



کنٹرول پینل

کنٹرول پینل جسے کنٹرول بکس بھی کہتے ہیں، ایک طرف ریسیور سے منسلک ہوتا اور اس سے منسلک ہوتا اور اس سے سگنل موصول کرتا ہے اور دوسری طرف یہ سکرپیر کے ہائیڈرالیک کٹ کے ذریعے سکرپیر کو خاص سطح پر رکھتا ہے۔ کنٹرول بکس پر لگی ہوئی سبز اور زرد بتیاں مطلوبہ سطح سے سکرپیر کی برابری، اونچائی یا نیچائی کو ظاہر کرتی ہیں۔



سکرپیر

لیزر سکرپیر ایک خم دار بلیڈ ہوتا ہے جو بلائی جگہ سے مٹی کو گریڈ کر نشیبی جگہ لے جا کر پھیلاتا ہے۔ یہ ٹریکٹر کے پیچھے منسلک ہوتا ہے اور ٹریکٹر کے ہائیڈرالیک سسٹم کے ذریعے کام کرتا ہے۔ اس کے اوپر ریسیور اور سولونائیڈ ہائیڈرالیک کنٹرول والو لگے ہوتے ہیں۔ ریسیور کو تاروں کے ذریعے کنٹرول بکس کے ساتھ جوڑ دیا جاتا ہے جبکہ والو پائپ کے ذریعے ہائیڈرالیک سسٹم کے ساتھ لگے ہوتے ہیں۔ یہ سارا سسٹم خود کار نظام کے تحت عمل کرتا ہے۔



BREVINI HYDRAULIC ASSEMBLY

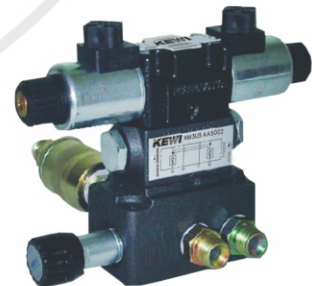
- Type: Electric control spool type
- Compatibility: For hydraulic control of laser scraper
- Power Source: 12 V DC through laser control panel
- Operating Pressure: 500-3000 psi (max.)
Flow control valve 1 in line
- Paint: Double coating after red oxide and surface finish



MADE IN ITALY

KIWI HYDRAULIC ASSEMBLY

- Type: Electric control spool type
- Compatibility: For hydraulic control of laser scraper
- Power Source: 12 V DC through laser control panel
- Operating Pressure: 500-3000 psi (max.)
Flow control valve 1 in line
- Paint: Double coating after red oxide and surface finish



MADE IN PAKISTAN

DETAILS SPECIFICATIONS OF NATIONAL AGRO SCRAPER

General:

Type Semi trailed
Hitching Tow hook attached with tractor over PTO (part of tractor)
Tractor Minimum 55 hp

Tyres:

Nos. 04
Type Pneumatic
Size 6.50 -14(10 Ply) or 6.00 -14(10 ply)
Make General or silver stone or panther (Made in Pakistan)

Bearings

Nos. 04
Type Tapered roller with grease housing 02 Nos.
Size 7509 Or 32209
& 7511 or 32211 or equivalent with external dust cover & seal
Make NTN or SKF (made in Japan)

Parking stand 01 No. provided near tow hook
Soil capacity 1.0 to 2.0 cubic meters

Overall dimensions

Overall length 4150 to 4400 mm
Overall height 1600 -1800 mm approx. depending upon the height of electric mast
Over all width 2470 to 2500
Approx. weight 900 – 1000 kg

Material specifications

Bucket

Body Made from 2440x700x7 -8 mm M.S. sheet
Bucket height 700 -720 mm, reinforced at top
with Z-type sheet made from 2440x380x7-8 mm
M.S. sheet

Side walls (Internal) 02 Nos . 700x215x10 mm M.S. sheet welded to bucket body

Side walls (External) 02 Nos. 700x565x10 mm M.S. sheet bolted to internal side walls.
Reinforced at front with 750x60 by mm L -Key bend

Adjustable side walls (External) 02 Nos. 500x125x10 mm M.S. sheet bolted with external side
walls adjustable according to scrapper angle

Braces 02 Nos. 570x50x7 -8 mm M.S. flat Cutting Edge Reversible double side edge
2430x150x16 -18 mm

Draw bar

Pipe 2030 mm long, 138 mm outer dia M.S. pipe of 5 -6 mm wall
thickness. Pipe ends closed with 140x140x15 -20 mm M.S. plates



DETAILS SPECIFICATIONS OF NATIONAL AGRO SCRAPER

Tong 02 Nos. 230x100x15 -16 mm M.S. plates reinforced with
02 Nos.360x60x12 -13 mm M.S. plate

Hook Forged steel 350 -400 mm long hook outer dia 100 -110 mm,
inner hole 40 -50 mm, out pipe dia 80 mm wall thickness 6 mm
welded to inside above tong plates (02 Nos. M.S. plates
230x100x15 -16 mm

Diagonal links

Eye ball screws 02 Nos. left hand threads , 38 mm dia, 02 Nos. right hand threads
38 mm dia.

Pipe 02 Nos. 4 -5 mm wall thickness, 1370 -1500 mm long, outer dia
58-60 mm including eye ball and screw

Eye balls 04 Nos.

Pins 04 Nos. 125 -140 mm, L-23 mm dia M.S. round with safety pins.

Links brackets (on pipe) Upper plate welded to draw bar pipe
02 Nos., 152x100x15 -16 mm M.S. lower plate
01 No., 345x100x15 -16 mm M.S. with pin holes

Links bracket (on bucket) 04 Nos., welded to the bucket plate & side walls, 100x85x15-16
mm M.S. plates with pin holes

Tow bar coupling 02 Nos., M.S. plates welded to pipe 420x150x10 mm

Attachment 02 Nos., M.S. plates welded to bucket body,
540x200x10 mm with adjustable tow bar height,
02 Nos., bolts 25 -30 mm dia
02 Nos., reinforcement plates 390x100x10 mm from lower side,
01 No. 200x200x6 mm M.S. plates welded at bucket base for
reinforcement of above plate
02 Nos., reinforcement plates 670x100x10 mm at top

Hydraulic assembly

Mast (attachment base) M.S. pipe 1000 mm long, 100 mm outer dia, 3-4 mm
wall thickness with extendable SS pipe (operated by DC electric
motor) compatible to mount receiver at top)



DETAILS SPECIFICATIONS OF NATIONAL AGRO TRIPOD

TRIPOD

Telescoping, metallic with following specifications.

- i) Capable for mounting LASER transmitter
- ii) Construction:
Heavy duty / robust, folding
- iii) Elevating Base:
Capable of providing line height adjustments up to 600-850 mm
- iv) Height:
3 meters with LASER transmitter



DETAILS SPECIFICATIONS OF NATIONAL AGRO POWER CABLE

CONNECTING CABLES:

- i) Power cable:

Current rating: 10 ampere

Insulation: 2 core/pvc/flex black(56/0.3 mm)

- ii) Control to receiver cable:

Current rating: 2 ampere

Insulation: 6 core/pvc/flex black(30/0.25 mm)

- iii) Control to scraper cable:

Current rating: 6 ampere

Insulation: 3 core/pvc/flex black(30/0.25 mm)

Note:-

All connectors are of military standards of type C5015.



MADE IN PAKISTAN

DETAILS SPECIFICATIONS OF NATIONAL AGRO POWER MAST

NATIONAL AGRO POWER MAST:

For LASER receiver with following specifications:

i) Length:

Overall length approx. 1450 mm. Extended length about 2250 mm provide with control box to be mounted at tractor to rise or lower the receiver height

ii) Weight:

25 kg±10%

iii) Foundation:

Inverted U-type 300x200x10 mm M.S. plate/channel adjustable base for fixing electric mast.



Hydraulic jack frame 02 Nos. 800x85x18 mm M.S. flat L -shaped or angle that makes right position of jack welded to bucket on Z -reinforcement sheet at center.

01 No., bolt/pin 200 mm long, 28 mm dia with scraper pipe

02 Nos., 200x85x18 mm M.S. flat welded in line with above two pieces below Z -reinforcement sheet along bucket curve

Hydraulic jack 01 No. 410 mm long, 90 mm outer dia, piston dia 40 mm double acting with two jacks pins 140 mm and 190 mm long, 28 -32 mm dia M.S. round

H-frame boxes 02 Nos., 200x200x6 -7 mm M.S. sheet, 800 mm long ends closed with 04 Nos., 200x200x6 -7 mm MS sheet

01 No. box, 200x200x6 -7 mm M.S. sheet, 800 mm long

Coupling assembly 02 Nos., hooks, 40 mm hole, outside dia 120 mm, 40x140 mm long MS.

02 Nos., M.S. plates 200x40x40 mm welded at bolt ends of H-frame to fix the above hooks.

02 Nos., pins, 40 mm dia, 145 mm long

02 Nos, plates 200x120x25 mm MS plates be welded below

Z-reinforcement present on bucket at two places to hold above

0 2 Nos., hooks, having 40 mm hole for fixing pins

Hydraulic jack 02 Nos., 200x80x15 -16 mm MS plates welded to H -frame

Bracket reinforced at base with 170x170x6 -7 mm MS plate

PRO SHOT —LASER—



National AGRO

- Agriculture Land Leveling
- Long Distance Elevation reference and grading



NATIONAL AGRO PROSHORT SPECIFICATIONS:

Working Range	Diameter 840m
Leveling Accuracy	±10 arc seconds (.060" @ 100') (1.5mm @ 30m)
Leveling Technology	Servo Motor
Self-Leveling Range	±5 degrees
Slope Matching Range	Single Axis, X Axis Self Levels, 10%
Height Alert	Normally Active, can be disabled
Rotation Coverage, Speed	360°, 600, 1200 rpm
Machine Control Compatible	Yes
Power Supply	4 C Alkaline or NiMH rechargeable(20/25 H)
Laser Beam Type, Power	670nm, <1mW
Automatic Shut-off	12 Minutes Out of Level
Environmental	Dust & water resistant (IP56)
Laser Rating	CDRH Class II, IEC Class 2
Laser beam type / power	Visible 670nm / <1.0mW
Operating Temperature	-20°C to +60°C (-4°F to +140°F)
Accessories	Carrying Case, Calibration Seven Drivers and Instructions Manual

NATIONAL AGRO MODEL NA-LLR-100

NATIONAL AGRO Control Box NA-LLR-100

Specifications

A) CONTROL BOX



For automatic hydraulic control with following specifications

- | | | |
|------|---|---|
| i. | Compatible with items at sr.No. (a) and (c) | |
| ii. | Control: | Automatic & manual |
| iii. | Display system | 3 lights for 5 grade position indications |
| iv. | Operational control: | Power on/off indicator & switch Auto/manual switch Lower raise switch |
| v. | Power source | 12 volt through tractor Battery |
| vi. | Protection | Safe shutdown of control box in case cables are damaged |
| vii. | Accessories | Carrying case, Spare bulb, Fuse, witch covers and Heavy duty clamp for tractor mounting |

B) LASER RECEIVER

Water and dust proof detector having following specifications

- | | | |
|-------|------------------------|---|
| i. | Number of channels: | five positions i.e. high, near high, on rade, near low and low |
| ii. | Vertical sensing range | 200 mm |
| iii. | Beam detection angle: | 360° |
| iv. | Operating range | 300 to 350 m |
| v. | Operating temperature | 0-50° C |
| vi. | Mounting clamp | Compatible with the Scraper mast |
| vii. | Light weight housing | |
| viii. | Power Source | 12 volt DC |
| ix. | Accessories | Carrying case |



NATIONAL AGRO PRECISION LEVEL MODEL LR350



Range of Transmitter with Receiver	Diameter (910M)
Leveling Accuracy	10arc seconds (.060@100')(1.5mm@ 30m)
Leveling Technology	Servo Motor
Self-leveling Range	5 degrees
Slope Matching Range	Single Axis, X Axis Self Levels, 8%)
Rotation Coverage, Speed	360,600,rpm
Machine Control Compatible	Yes
Warranty	12 months defects coverage
Power Supply	4 C Alkaline or NiMH rechargeable
Run Time	115 Hours (Alkaline), 65 Hours (NiMH)
Automatic Shut-off	12 minutes out of level
Environmental	Dust & water resistant (IP56)
Laser Rating	CDRH Class IIIa, IEC Class 3r
Laser beam type / power	Visible 650 to 670nm /2.mW
Operation temperature	-20 c to 60 c (-4 f to +140 f)

NATIONAL AGRO PRECISION LEVEL MODEL i77R

ROTATING LASER LEVEL

RED BEAM

i77R



SPECIFICATIONS

Self Levelling Range	± 5°
Accuracy	± 1.5mm @ 30m
Working Distance	600m diameter
Function	Horizontal
Scan Mode	No
Slope Mode	Yes - Single manual grade to 5° 9%
Rotation Speeds	0, 60, 120, 300, 600 rpm
Light Source	Red diode 635nm
Laser Class	Class 2
Water Resistant, Shockproof	IP66
Power Source	9 Ah 3.7v lithium-ion
Working Time Continuous Use	40 hrs - approx
Charging Time	4 hrs
USBC Charging	Yes; including 12v car charger
High Wind Sensitivity Re-set	Yes
Remote Control	Yes, iCR7
Weight-Unit Only	2.48Kg
Detector - German Made	LRX10 Double sided
Detector Pick-Up	90mm -30mm to +60mm
Detector Power	1-AA > 50 hrs run

NATIONAL AGRO MODEL NA-200

NATIONAL AGRO

Control Box NA-200

Specifications

CONTROL BOX



Display	Red Hi/ Low, On-grade Green	Yes
Operating voltage	12-24 VDC, Reverse Polarity Protected	12-24VDC
Electrical connection	Standard Military Type	Yes
Valve compatibility	Proportional time (On/Off) only	Yes
Remote switch option	Rasie/Lower, Auto/Manual Switches	NA-200

RECEIVER

Receiver NA-200

Beam reception	360 Degree
Vertical reception	Not less than 180 mm
Accuracy	Set at control box
Power	12-24 VDC
Display	Red Hi/Low, On-grade = green
Out of beam indication	High and Low-20
Operating temperature	-20 degree +60 degree centigrade



NATIONAL AGRO PRECISION LEVEL MODEL NA-CB-150E



Technical Specification:

Application	Receives Beam emitted by transmitter and transfer Signals to control Box
Reception Area	190mm
Reception Angel	360 degrees
Operating temperature	-20 to + 70 c
Origine	Made in Pakistan
Model	NA-CB-150E
Control	Automatic & Manual
Displaye System	Light Indicators, 5 Grade Position indications
Operational Control	power on/off indicator, on/off control switch, auto /manual switch and raise / lower switch
Cables System	power cable standard military connectors control & receiver cable standard military connectors control to scraper cable standard military connectors
Power Source	12-24 DC
Accessories	caring case, mounting
Warranty	one year of parts and service



Contact us

Sargodha Office:

Office # 52-53, Al-Rehman Complex Behind
Hotel-ONE, Qanchi More, Sargodha. Cont: 0322-8600619

Sargodha Factory:

Commercial Building Situated at,
Mian Kot Momin Sargodha Road. Cont: 0344-8600619

Lahore Office:

LGF-73 Defence Shopping Mall
Main Boulevard DHA Phase-1 Lahore. Cont: 042-36612400

